

## Engage

- How do animals survive their environment?
- How do animals survive a changing environment?
- What is causing changes to the environment?
- What can we do to help animals survive their environment?



## Explore

### Case Study: Sun Sand Salt and Survival on South Stradbroke Island (QML Kits)

1. Sandy Beaches
2. Frontal Dunes
3. Mangroves
4. Swamp
5. Mixed woodland



### Issues to consider:

1. Conditions for survival and sources of food:
  - What conditions do I have to be able to survive?
  - What do I eat?
2. Adaptations to survival and obtaining food:
  - How do I survive the conditions?
  - How do I catch my food?

### What to do

1. Divide group into groups of two or three.
2. Select a zone to study (Fold out zonal information)
3. Obtain a selection of specimens for each zone
4. Consider and respond to issues of survival (conditions and food)
5. Highlight unresolved questions

#### Resources:

- Zone information card
- Specimens
- Sheet #1

## Explain

Find explanations for unresolved questions.

### What to do

1. Share what you have found with others and try to resolve unanswered questions.
2. Consult information cards for further information.
3. Research further if required.



## Elaborate

### A. Specimen study: looking closely at the local environment

- Looking closely through specimen analysis
- What can we learn by looking closely?
- Model analysis activity



### What to do

1. Divide group into groups of two or three.
2. Select a specimen for close study.
3. Perform specimen analysis (Sheet #2)
4. Respond to issues for survival (Sheet #1)
5. Share responses

#### Resources:

- Specimen
- Sheet #2
- Sheet #1

### B. Human impacts on sustainability:

1. How well would your specimen cope with:
  - a. Changes to conditions?
  - b. Changes to food sources?
2. What are some of the impacts that humans make on
  - a. Conditions for survival and
  - b. Sources of food?

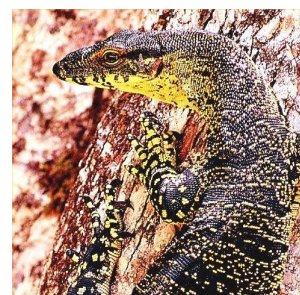


## Evaluate

- Reflect on the ways that animals can survive their environment.
- Presentations could focus on one of the key questions posed at the engagement phase.

*What can we do to help animals survive their environment?*

- Format for presentations could be in a variety of formats and media including exhibitions and displays.



Specimen: \_\_\_\_\_ Environment: \_\_\_\_\_

Questions	What my group thinks	What is the evidence?
What conditions do I have to be able to survive? <ul style="list-style-type: none"><li>• Temperature</li><li>• Water</li></ul>		
How do I survive the conditions? <ul style="list-style-type: none"><li>• Features</li><li>• Behaviour</li></ul>		
What do I eat? <ul style="list-style-type: none"><li>• Plants</li><li>• Animals</li></ul>		
How do I catch and eat my food? <ul style="list-style-type: none"><li>• Features</li><li>• Behaviour</li></ul>		

<p>What eats me?</p> <ul style="list-style-type: none"><li>• Animals</li></ul>		
<p>How do I avoid being eaten?</p> <ul style="list-style-type: none"><li>• Features</li><li>• Behaviour</li></ul>		

Questions my group would like answered: