

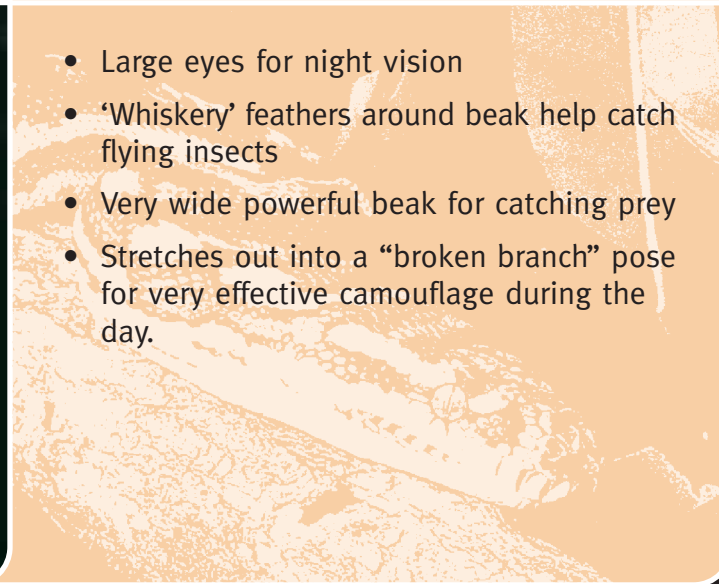
Tawny Frogmouth

Podargus strigoides



Adaptation to environment

- Large eyes for night vision
- 'Whiskery' feathers around beak help catch flying insects
- Very wide powerful beak for catching prey
- Stretches out into a "broken branch" pose for very effective camouflage during the day.



Feeding relationships

What do I eat?

- Insects, lizards & other small animals
- Can fly fast over short distances to catch prey from ground & tree branches.

What eats me?

- Larger birds of prey
- Pythons.

- Length 40 cm
- Owl-like bird but unlike owls & other raptors, does not have a grasping foot for catching prey.