

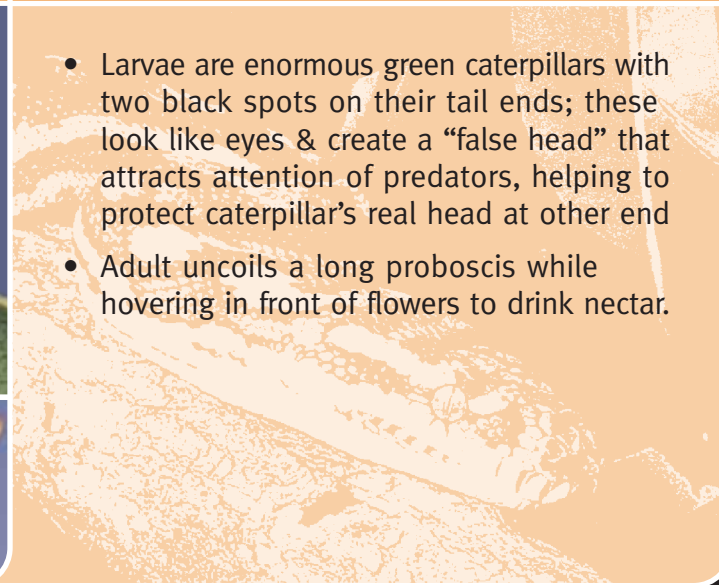
Double-headed Hawk Moth

Coequosa triangularis



Adaptation to environment

- Larvae are enormous green caterpillars with two black spots on their tail ends; these look like eyes & create a “false head” that attracts attention of predators, helping to protect caterpillar’s real head at other end
- Adult uncoils a long proboscis while hovering in front of flowers to drink nectar.



Feeding relationships

What do I eat?

- Caterpillars feed on leaves of Banksia, Macadamia, Silky Oak & related plants
- Moths feed on nectar.

What eats me?

- These large caterpillars & moths are a popular food for Tawny Frogmouths & other birds
- Small mammals.

- Moth Length: 65 mm. Wingspan: 140 – 160 mm • Larva Length: up to about 100 mm • Australia's largest hawk moth
- Adult moths have a dark brown triangle on each forewing.