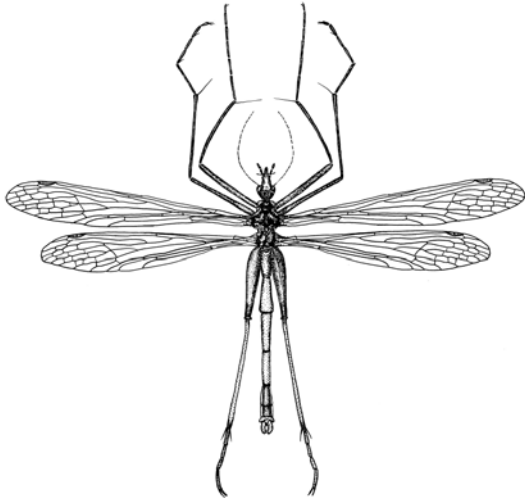


Scorpion fly

Harpobittacus tillyardi



Adaptation to environment

- Adults predatory: when waiting for prey, they hang from plants by front legs; hind leg has a strong claw at tip for catching & holding prey
- Males present females with a gift of a dead insect as part of their courtship ritual
- Eggs dropped on ground; larvae live in leaf litter & pupate in ground.

Feeding relationships

Where do I live? Swamp Mixed Woodland

What do I eat?

- Adults feed on other flying insects; also feed on nectar from flowers.

What eats me?

- Spiders; other predatory insects like robber flies & assassin bugs.

- Length 30 mm
- Look like long-legged crane flies but have two pairs of wings (flies only have one pair of wings).